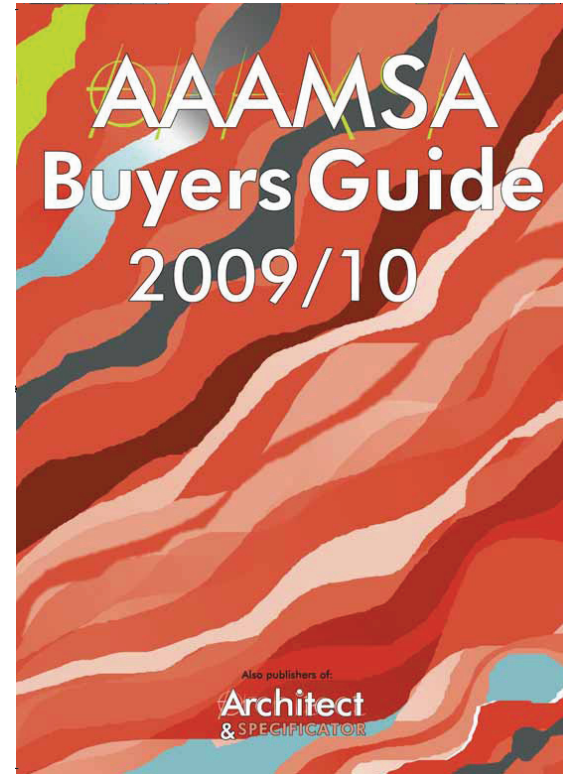


AAAMSA: Association of architectural aluminium manufacturers of South Africa

- Go to [Specifile on-line](#)
- Search Specifile
- [Click here to view supplier details](#)
- [See full brochure](#)



Specifile - Architectural Information Service - the source of  
South African building products and suppliers



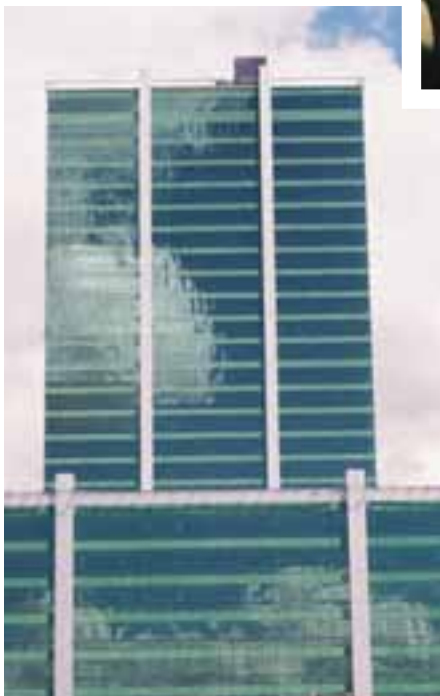
# AAAMSA Buyers Guide 2009/10

Also publishers of:

 **Architect**  
& SPECIFICATOR

## WHAT'S BEHIND OUR AWARD-WINNING FAÇADES?

▶ GREAT PEOPLE ▶ GREAT PARTNERSHIPS ▶ GREAT PERFORMANCE



GRINAKE-LTA BUILDING  
PRIVATE BAG X33  
KEMPTON PARK, 1620  
SOUTH AFRICA

**T** : +27 11 578 6200

**F** : +27 11 578 6384

**E** : [enquiries@grinaker-lta.co.za](mailto:enquiries@grinaker-lta.co.za)

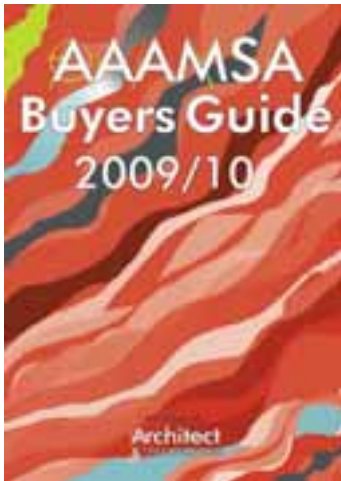
DIVISIONS

**CAPE T** : +27 21 703 1040

**EAST T** : +27 31 710 6100

**FAÇADES AND INLAND T** : +27 11 578 6200

[www.grinaker-lta.com](http://www.grinaker-lta.com)



# AAAMSA Buyers Guide 2009/10

- |    |  |               |   |
|----|--|---------------|---|
| 3  | The <b>AAAMSA</b> Group  | 51            | SANS 10400: Part N - <b>Glazing</b>                     |
| 7  | Insist on "Registered AAAMSA Contractors"  | 67            | Glass & <b>Glazing</b> Certificate for Skylight Systems |
| 11 | Environmental <b>Comparison</b> of Window Materials                                    | 71            | SABISA <b>Partitioning</b> Certificate                  |
| 15 | History of NFRC  | 73            | <b>SABISA</b> Certificate for Suspended Ceilings        |
| 22 | <b>TIASA</b> Fire Performance Classification Register                                  | <b>MATRIX</b> |   |
| 23 | TIASA Product <b>Identification</b> Classification in Accordance with SANS 428         | 8             | AAAMSA <b>Contractors</b> Matrixes                      |
| 24 | <b>TIASA</b> Occupancy or Building Classification in Accordance with SANS 10400 Part A | 28            | TIASA <b>Matrixes</b>                                   |
| 25 | The Specification of Thermal <b>Insulation</b> Materials                               | 36            | EPSASA <b>Matrixes</b>                                  |
| 27 | Why <b>SANS</b> 428?   | 46            | <b>ASDA</b> Matrixes                                    |
| 33 | No <b>Ignition</b> , No Spread   | 54            | <b>SAGGA</b> Matrixes                                   |
|    |  | 66            | SASEMA <b>Matrixes</b>                                  |
|    |  | 68            | <b>SASA</b> Matrixes                                    |
|    |  | 70            | <b>TPMA</b> Matrixes                                    |
|    |  | 75            | SABISA <b>Matrixes</b>                                  |



AAAMSA, PO Box 7861, 1685 Halfway House, E-mail: [aaamsa@iafrica.com](mailto:aaamsa@iafrica.com)  
Tel: (011) 805-5002, Fax: (011) 805-5033, Website: [www.aaamsa.co.za](http://www.aaamsa.co.za)



SABISA, the SA Building Interior Systems Association



EPSASA, the Expanded Polystyrene Association of Southern Africa



ASDA, the Aluminium Stockists' & Distributors' Association



TPMA, the Thermal Panel Manufacturers' Association



SASA, the Skylight Association of Southern Africa



AAAMSA Fenestration



TIASA, the Thermal Insulation Association of Southern Africa



SAGI, South African Glass Institute



SASEMA, SA Shower Enclosures Manufacturers Association



SAFIERA, South African Fenestration Insulation Energy Rating Association



SAGGA, the SA Glass & Glazing Association

Promech Publishing also produces *Architect & Specifier*. This is an alternate monthly magazine. 9100 copies are distributed to individuals and companies involved in the building industry

**Promech Publishing**

Tel: (011) 781-1401 Fax: (011) 781-1403

E-mail: [archspect@promech.co.za](mailto:archspect@promech.co.za) Website: [www.promech.co.za](http://www.promech.co.za)

Managing Editor: Susan Custers, Advertising: Di Bluck

DTP: Zinobia Docrat, Printer: Typo Colour Specialists



**Corporate Members:**

GSA

KMG  
Kleinwort & Sons

McCoy's  
CORPORATION

EVERITE

HunterDouglas™

FFG  
BUILDING  
GLASS

WISPECO  
Aluminium

GLASFIT  
ON THE BENCH & IN THE

NATIONAL GLASS  
DISTRIBUTION

G  
glass corporation



LAFARGE  
GYPSUM

sheerline  
ALUMINIUM SYSTEMS

PRIMADOR

HULAMIN  
BUILDING SYSTEMS

PG  
GLASS

M  
MASONITE

Gyproc

AGI

WEST  
CAPE  
BUILDING SYSTEMS

elicone

**Associations Aims:**

To be the Professional Organisation within South Africa which is Uniquely Committed to the Disciplines & Standards of Quality which surround the Manufacture & Installation of Architectural Aluminium Products, Interior Building Systems, Glass and Glazing, Building Insulation & Associated Activities. To provide a Forum for the Exchange of Expertise & Interaction between Individuals & Organisations to Create a Competitive Advantage for the Architectural Aluminium, Glass & Insulation Industry. To communicate to all Stakeholders in the Architectural Aluminium Industry the Register of Accredited Members of AAAMSA who have Satisfied the Association's Requirements of Predetermined Standards

**Representing:**

AAAMSA  
Transvaal

SAFIERA  
South African Federation  
& Promotion Energy Rating  
Association

TEKSA  
Thermal Insulation  
Association of Southern Africa

SAIPA  
Specialized Polystyrene  
Association of Southern Africa

SAGI  
South African Glass Institute

SABSA  
South African Building  
Interior Systems Association

SAGGA  
South African Glass and  
Glazing Association

SASMA  
SA Shower Enclosure  
Manufacturers Association

SFA  
Spray Association of  
Southern Africa

ASDA  
Aluminium Stockists and  
Distributors Association

TPMA  
Thermal Panel  
Manufacturers Association

P.O.Box 7861,  
Halfway House 1685  
Tel: (011) 805-5002  
Fax: (011) 805-5033  
E-mail: [aaamsa@iafrica.co.za](mailto:aaamsa@iafrica.co.za)  
[www.aaamsa.co.za](http://www.aaamsa.co.za)



# The AAAMSA Group



Hans A Schefferlie,  
Executive Director

**The Association of Architectural Aluminium Manufacturers of South Africa (AAAMSA) was founded by eight companies in July 1974 to foster trade and commerce in relation to those persons associated with the manufacture and installation of architectural aluminium structures. Its main objective is to promote commercial and group interest.**

Currently the AAAMSA Group administers, beside the architectural aluminium industry, the glass, ceiling and partitioning and insulation industries represented by the Associations shown below.

The current membership total stands at 758 representing some 700 manufacturers, distributors, contractors and their branches nationally.

The AAAMSA Group is represented at the following industry forums:

- MBSA Master Builders South Africa
- JBCC Joint Building Contracts Committee
- SABS South African Bureau of Standards
- SECC Specialist Engineering Contractors Committee
- CETA Construction Education and Training Authority
- CIDB Construction Industry Development Board
- BOBS Botswana Bureau of Standards

The marketing is focussed on the specifier namely Architects, Engineers, Product Managers and Quantity Surveyors.

This marketing is done in the shape of Selection Guides and General Specifications which are based on the requirements contained in the National Building Regulations Act and the relevant SABS Standards namely SANS 10400, SANS 10160, SANS 10137 and the like.

Examples of these Guides and Specifications are:

- Selection Guide for Glazed Architectural Products introducing EE in Fenestration
- General Specification for Drywall Partitions and Lightweight Internal Walls
- What Every Glazier and Building Inspector must know about Glass Installation and Products
- Guide for the Construction of Environmentally Comfortable Homes
- Selection Guide for Expanded Polystyrene Insulation Applications

The AAAMSA Group has established in house testing facilities to test certain material properties for Expanded Polystyrene and has external testing facilities in Cape Town, Durban, Port Elizabeth and Johannesburg to test architectural aluminium products in respect of their structural strength, water penetration and air leakage.

Results of testing by members is updated bi-monthly before being published in the abovementioned "Architect & Specifier" magazine to assist specifiers to select appropriate materials and products for their projects.



AAAMSA Group  
Tel: (011) 805-5002  
Fax: (011) 805-5033  
Email: [aaamsa@iafrica.com](mailto:aaamsa@iafrica.com)  
Website: [www.aaamsa.co.za](http://www.aaamsa.co.za)



Inner Circle, Morningside

# Grinaker-LTA Façades Delivers Award-Winning Cladding

**Glass and aluminium curtain walling specialist, Grinaker-LTA Façades, is in the business of turning buildings into landmarks. A division of Grinaker-LTA's Building Business Unit and part of the JSE-listed Aveng Group, Grinaker-LTA Façades has recently completed the striking cladding for several high profile developments around South Africa. These include the Civitas buildings in Pretoria's CBD, which are the new headquarters of the Department of Health, as well as the Coega Development Corporation's offices at Port Elizabeth's Coega Industrial Development Zone.**

**G**rinaker-LTA Façades is currently working on a number of buildings in Gauteng, including the Inner Circle development in Morningside's Rivonia Road and 15 Alice Lane Towers in Sandton. Most recently, the division has been awarded the contract for the curtain walling and shopfronts at the Sandton Eye (1 Station Place). The state-of-the-art, contemporary façades that Grinaker-LTA Façades manufactures and installs are winning recognition, as well as coveted awards.

The operation's success has prompted the expansion of its facility to meet current demands and future prospects, states general manager Colin Gardner.

He reports that Grinaker-LTA Façades' R33-million sub-contract at the Inner Circle offices is ahead of schedule and

nearing completion. Set atop a podium, the Inner Circle office building will be a new landmark in Morningside's Rivonia Road, with its shimmering facade comprising a combination of Arctic Blue and Marine Blue glass in powder coated unitised aluminium support framework. The division has supplied 1600 glazed units, each comprising four pieces of glass. The curtain wall is a total 10 500 m<sup>2</sup> in size, and is designed to maximise the natural lighting in the office areas while reducing solar heat build-up in the 10-storey office block, resulting in lower lighting and air-conditioning energy demands.

"The design and architectural team have put together a well thought-out glass structure aimed at achieving optimal light and thermal efficiency," Gardner comments.

In addition to its energy-efficient qualities, the curtain wall to the new office block also matches the existing Inner Circle building located adjacent to it on the same property.

Unique project features include external aluminium feature bands and sloping screens, which add to the aesthetics of the building.

Portable lifting hoists were employed to lift Inner Circle's 312 000kg of curtain walling into position.

A timeous delivery has turned a lot of heads, with Grinaker-LTA Façades being widely commended for its work on this high-profile building in Sandton. The division was tasked to clad the entire Inner Circle building within six months. A cost effective building maintenance system will

be integrated into the façade, for easy cleaning and upkeep of the curtain wall.

Grinaker-LTA Façades' recently-awarded contract for the curtain wall on 15 Alice Lane Towers will be a testing undertaking, Gardner notes, with project challenges including carefully negotiating the vertically curved curtain wall that protrudes 5m past the outside of the structure and the extension of the curtain wall above the roof level. The gable ends will be a combination of composite panel units with recessed diagonal strip windows. This building's main glass façade consists of a variety of patterned glass elements, Gardner explains, and the main challenge, he notes, involves the accuracy of the workmanship. "Fitting the right glass into the right panel is paramount," he stresses.

Grinaker-LTA Façades' work at the 36-year-old Civitas building in Pretoria entailed the installation of a new 15 500 m<sup>2</sup> glass curtain wall designed to give the old skyscraper a new look, and make it energy efficient.

Grinaker-LTA Façades also installed a similar modern glass façade on the new nine-storey office block constructed adjacent to the original Civitas building, to create additional tenant space for the Department of Health. The new building needed to match the existing one," Gardner notes, adding that a total of 8 800 m<sup>2</sup> of glass curtain wall has been installed on it.

"The glass curtain walls were also designed to improve the natural lighting in the office areas while simultane-



An artist's impression of 15 Alice Lane Towers

Civitas in Pretoria



ously reducing solar heat build-up within the buildings, resulting in decreased lighting and air-conditioning energy requirements. With SA's building regulations under review with the aim of reducing energy demand from industry by 15% in 2015, the new Civitas buildings' energy-efficient features are particularly noteworthy. These energy-efficient glass façades have resulted in the buildings surpassing the target to reduce overall energy consumption by 24% on the air-conditioning side. This represents significant cost savings for the client, the Department of Public Works, and the tenant, the Department of Health."

Grinaker-LTA Façades' sub-contract at Civitas won the Construction World Best Projects Award for its category in this industry magazine's prestigious annual competition.

Installing 7 000 m<sup>2</sup> of "Pure White" Hulabond Cladding to the external envelope of the new Coega Development Corporation head quarters is how Grinaker-LTA Façades contributed to the creation of this new landmark in Port Elizabeth. This office block actually stands out on the horizon when one enters the city. The division's sub-contract here also entailed the installation of a 417 m<sup>2</sup> curtain wall – glazed in Serrena Green glass - at the office block's entrance.

Grinaker-LTA Façades' factory is located at the Grinaker-LTA head office in Jet Park. Gardner says that the facility boasts state-of-the-art equipment, including CNC machinery, two-part silicone machines and other specialized machinery. Curtain walling, cladding and glazing takes place at the facility, from where, once the product has been fabricated, it is transported to site for installation. The division is currently involved in "significantly" expanding the facility to cater to growing demands.

*Grinaker-LTA Façades, Tel: (011) 578-6200, Email: [cgardner@grinaker-lta.co.za](mailto:cgardner@grinaker-lta.co.za), Website: [www.grinaker-lta.com](http://www.grinaker-lta.com)*





# Insist on “Registered AAAMSA Contractors”

**The number of requests from the public to our Association to inspect workmanship of installed glazed aluminium fenestration is on the increase.**

Of grave concern are the instances where the contractor has accepted upfront payments and does not perform the work on time or, in certain cases, not at all.

The public pays these deposits willingly without requesting from the contractor a hundred percent performance guarantee issued by a reputable financial institution to protect any upfront payments.

Of the cases reported to our Association all contractors involved are NOT members of AAAMSA Fenestration. These companies are NOT “Registered AAAMSA Contractors” and their names are not included in the register as these contractors have not tested successfully any products manufactured by them.

We know of instances whereby the public had to pay twice for work following initial contracts with companies which are unknown to us and not registered with our Association.

It is in the nature of the business that glazing companies progress into installers and manufacturers of aluminium products.

Although these glazing companies may be members of the South African Glass & Glazing Association (SAGGA) these companies are NOT “Registered AAAMSA Contractors”

Our Association can therefore not vouch for the workmanship of these SAGGA members in respect of their manufacturing capabilities for aluminium work.

Any party requiring aluminium work should consult our register of “Registered AAAMSA Contractors” which is published in this magazine and on our website [www.aaamsa.co.za](http://www.aaamsa.co.za). The register is updated regularly and as contractors come and go, please contact our Secretariat on Tel: (011) 805-5002 to confirm or otherwise of the registered status of the aluminium contractor selected to execute the contract.

“Registered AAAMSA Contractors” are the only companies who can provide “The AAAMSA Performance Test Certificate” which confirms the

standard of workmanship of the contractor. Often aluminium fenestration is being measured as part of the Main Contractors work instead of the Professionals calling for formal tenders for this aluminium work.

This practice opens the door for the builders to shop around for the cheapest deal available with scant regard for quality or standards.

Although we recognize that Building Contractors, or anyone else for that matter, have every right to place their orders with whomever they wish, we request the Professionals to call for formal tenders in respect of aluminium fenestration to ensure the correct and capable aluminium contractor duly registered with AAAMSA is appointed to ensure monies of clients are spent in the best possible way.

We encourage Building Contractors and Professionals alike to insist that the aluminium fenestration contractor provides an “AAAMSA Performance Test Certificate” for the products used in the contract.

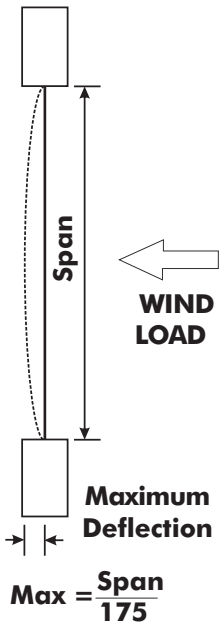
**Insist on “Registered AAAMSA Contractors” and have peace of mind.**

**Hans A Schefferlie  
Executive Director  
The AAAMSA Group**



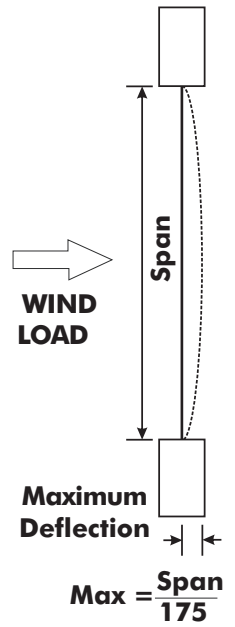






# Maximum Deflection 1/175<sup>th</sup> of Span

**If It Moves - It Fails  
Select Products  
to suit Wind Load**



**Deemed-to-Satisfy Table based on SANS 10160 for Wind Load and Product Performance Class Designation:**

TERRAIN CATEGORY AS PER SANS 10160	HEIGHT FROM GROUND TO HEAD OF PRODUCTS IN METRES			
	5	10	15	20
	<b>CATEGORY 1</b> Open sea, lake shores and flat treeless plains	A2 1500 Pa	A3 2000 Pa	A3 2000 Pa
<b>CATEGORY 2</b> Airfields, open parklands or farmlands and undeveloped outskirts of towns and suburbs	A2 1500 Pa	A2 1500 Pa	A3 2000 Pa	A3 2000 Pa
<b>CATEGORY 3</b> Built-up areas	A0 600 Pa	A1 1000 Pa	A1 1000 Pa	A2 1500 Pa
<b>CATEGORY 4</b> City Centres	A0 600 Pa	A1 1000 Pa	A1 1000 Pa	A2 1500 Pa

For additional information contact your Aluminium System Supplier or AAAMSA at email: [aaamsa@iafrica.com](mailto:aaamsa@iafrica.com)

**Standard Products  
No Label - No Performance Guarantee**

COMPANY XYZ	
	Wind load 600Pa
	<b>Category A0</b>

COMPANY XYZ	
	Wind load 1000Pa
	<b>Category A1</b>

COMPANY XYZ	
	Wind load 1500Pa
	<b>Category A2</b>